

# exposure

for complete calendar listings  
see [www.ceramicsmonthly.org](http://www.ceramicsmonthly.org)





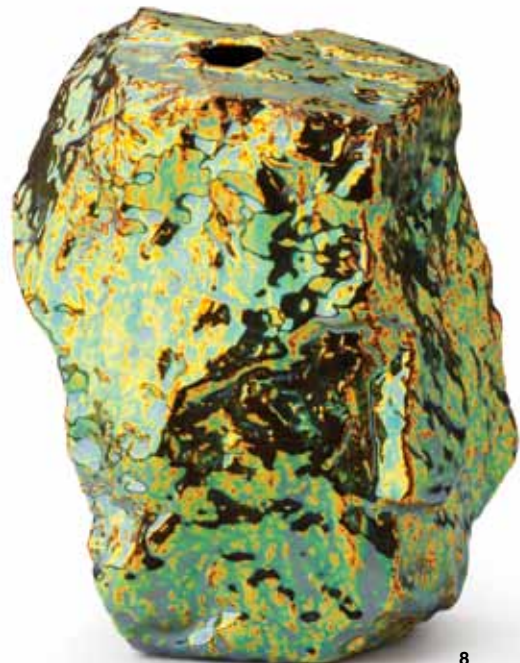
6



7



5



8

1 Shoji Satake's *On-na*, 6 in. (15 cm) in height, slip-cast, altered, and 3-D printed clay, glaze, 2015. 2 Shoko Teruyama's oval plate, 12 in. (30 cm) in diameter, earthenware, slip, glaze, 2015. 3 Yoko Sekino-Bové's *A Thousand Feathers Pillow*, 10 in. (25 cm) in length, mid-range porcelain, underglaze, 2015. "Michi: Distinctive Paths, Shared Affinity," at Baltimore Clayworks ([www.baltimoreclayworks.org](http://www.baltimoreclayworks.org)) in Baltimore, Maryland, through March 5, 2016. 4 Scott Lykens's *Cherry Blossom Basket*, 8 in. (20 cm) in length, earthenware, majolica, 2015. "At Your Service," at Baltimore Clayworks ([www.baltimoreclayworks.org](http://www.baltimoreclayworks.org)) in Baltimore, Maryland, March 11–May 7, 2016. 5 George Timock's *Vessel SSS*, 10½ in. (27 cm) in height, porcelain, luster, 2014. Photo: EG Schempf. 6 Peter Pincus' vessel, 26 in. (66 cm) in height, colored porcelain, gold luster, PC-11, 2015. 7 Cary Esser's *Veil (15-10-2)*, 16¾ in. (43 cm) in height, glazed earthenware, 2015. Photo: EG Schempf. "The Once and Future: New Now," at Sherry Leedy Contemporary Art ([www.sherryleedy.com](http://www.sherryleedy.com)) in Kansas City, Missouri, February 5–March 19, 2016. 8 Julia Kunin's *Rock Vase*, ceramic. "Dysfunction," at Burlington City Arts ([www.burlingtoncityarts.org](http://www.burlingtoncityarts.org)), in Burlington, Vermont, through April 9, 2016.



# exposure



1

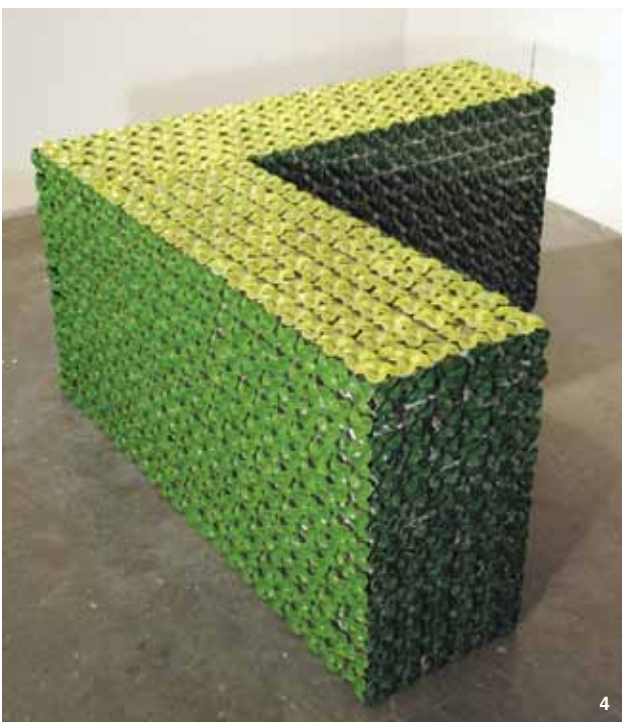
1 Katelyn Gettner's *Beehive*, porcelain, glaze, 2014. "Every Semester: Collecting KCAI Ceramics 1995–2015" at The Belger Arts Center ([www.redstarstudios.org](http://www.redstarstudios.org)) in Kansas City, Missouri, through March 19, 2016. 2 Mariko Paterson's *Eye of the Tiger*, 13 in. (33 cm) in diameter, clay, glaze, lusters, decals, 2015. 3 Colleen Toledano's *Grandiose Growth*, 4 ft. (1.2 m) in height, stoneware, commercial decals, balsa wood, 2015. "Decalcomaniacs" at The Belger Arts Center ([www.redstarstudios.org](http://www.redstarstudios.org)) in Kansas City, Missouri, March 4–May 21, 2016. 4 Kim Dickey's *Monochrome Corner*, 4 ft. 2 in. (1.3 m) in length, glazed terra cotta, aluminum, rubber, grommets, silicon, 2015. 5 Kyle Triplett and Rain Harris' *Tulpomanie* (detail), 4 ft. (1.2 m) in length, black clay, metal, 2015. "The Garden Party" at The Belger Arts Center ([www.redstarstudios.org](http://www.redstarstudios.org)) in Kansas City, Missouri, February 5–May 21, 2016.



2



3



4



5

# OBJECTIFY

March 4 – May 21, 2016

Beth Cavener  
Peregrine Honig  
Jenny Kendler  
Lindsay Pichaske  
Merrie Wright



Exhibitions through May 21st, 2016

*Desire*

*Role Models*

*The Kansas City Connection*

*Every Semester: Collecting KCAI Ceramics 1995-2015*

*Home Base: Red Star Studios Member Exhibition*

*Alumni Gathering: Red Star Studios Past and Current Artists in Residence*

*Archie Bray Foundation: Resident and Visiting Artists*

*The Garden Party*

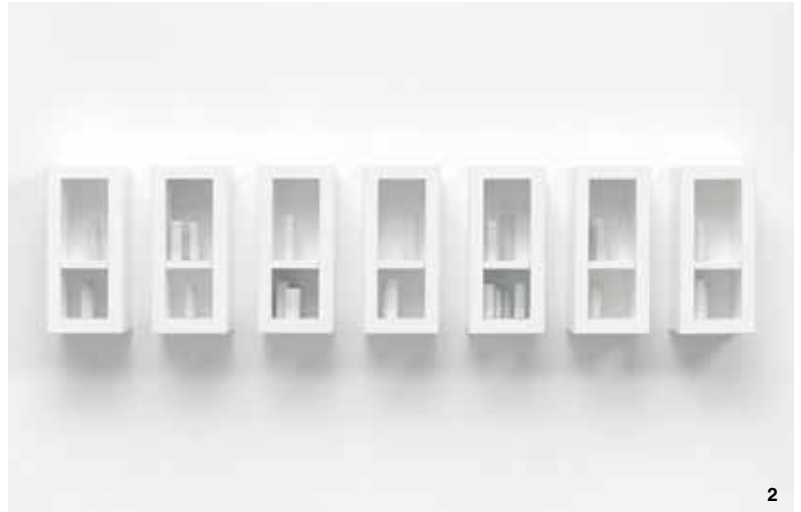
*Decalcomaniacs*

2011 Tracy Avenue Kansas City, MO 64108  
816.474.7316 [www.CraneYardStudios.org](http://www.CraneYardStudios.org)

Beth Cavener, *Unrequited*, 2015, resin-infused refractory material, paint, steel base, 15" x 45" x 16", courtesy of the artist



# exposure



1 Sue Johnson's *Blue Plate Special (Dory with Dirty Rice)*, *Black Set* from the *Incredible Edibles* series, ceramic. Courtesy of Arts/Industry Program, John Michael Kohler Arts Center. "At Your Service," at Houston Center for Contemporary Craft ([www.crafthouston.org](http://www.crafthouston.org)), in Houston, Texas, through May 8, 2016. 2 Edmund De Waal's *the first day and the first hour*, 5½ ft. (1.6 m) in length, porcelain, wood, aluminum, glass, 2013. Photo: Mike Bruce. 3 Ai Weiwei's *Bowl of Pearls*, 3 ft. 3 in. (1 m) in diameter, porcelain, 2006. 4 Setsuko Nagasawa's *Nomade*, 18½ in. (47 cm) in length, ceramic, 2008. "Ceramix," at La Maison Rouge ([www.lamaisonrouge.org](http://www.lamaisonrouge.org)) in Paris, France, March 8–June 5, 2016. 5 Steven Heinemann's *untitled (disc)*, 20 in. (51 cm) in height, terra cotta, engobe, 2003. Photo: Mauro Magliani and Barbara Piovan. "Passion for Ceramics: Frank Nievergelt Collection," at Musee Ariana (<http://institutions.ville-geneve.ch/fr/ariana>) in Geneva, Switzerland, April 8–September 25, 2016. 6 Martha Russo's *Nomos*, 18 ft. (5.4 m) in length, porcelain, wood, Styrofoam, paper, pigment, 2007. Photo: Oren Eckhaus. Courtesy of Claudia Stone Gallery, New York, New York, and Goodwin Fine Arts, Denver, Colorado, "Coalescere," at Boulder Museum of Contemporary Art (<http://bmoca.org>) in Boulder, Colorado, March 31–June 12, 2016.

# ceramic art London 2016

THE INTERNATIONAL CONTEMPORARY  
CERAMICS EVENT OF THE YEAR

FRIDAY 8 - SUNDAY 10 APRIL 2016

Presented by the Craft Potters Association



Image: Elke Sada, Photographer: Christoph Kremtz

## NEW VENUE

CENTRAL SAINT MARTINS, 1 GRANARY SQUARE  
KING'S CROSS, LONDON N1C 4AA

## FURTHER DETAILS

ORGANISER@CERAMICS.ORG.UK  
TELEPHONE: +44 (0)20 3137 0750

[WWW.CERAMICS.ORG.UK](http://WWW.CERAMICS.ORG.UK)   

**ual:** university  
of the arts  
london  
central  
saint martins







1



2

1 Afghan Traditional Pottery's Istalif ceramics, ceramic, Ishkar glaze. "Turquoise Mountain: Artists Transforming Afghanistan," at Arthur M. Sackler Gallery ([www.asia.si.edu](http://www.asia.si.edu)) in Washington, DC, March 5–January 29, 2017. 2 Jenny Mendes' *Both Sides*, terra cotta. "Equality," at The Ohio Craft Museum ([www.crafthouston.org](http://www.crafthouston.org)), in Columbus, Ohio, through March 26, 2016. 3 Koren Christofides' *Chicken Little*, 20½ in. (52 cm) in height, mixed clays, terra sigillata, slip, washes, glaze, fired to cone 10 in a reduction kiln, 2014. "A Modern Medieval Bestiary," at Gallery IMA (<http://galleryima.com>) in Seattle, Washington, March 3–April 2, 2016. 4 Anne Drew Potter's *Three Little Girls with the Shirley Temple Curls*, 5 ft. 4 in. (1.6 m) in length, terra cotta, 2012. "InCiteful Clay," at the Cultural Lab at Mid American Arts Alliance ([www.maaa.org](http://www.maaa.org)) in Kansas City, Missouri, March 4–19, 2016.



3



4